



Family Resource Centers

Overview

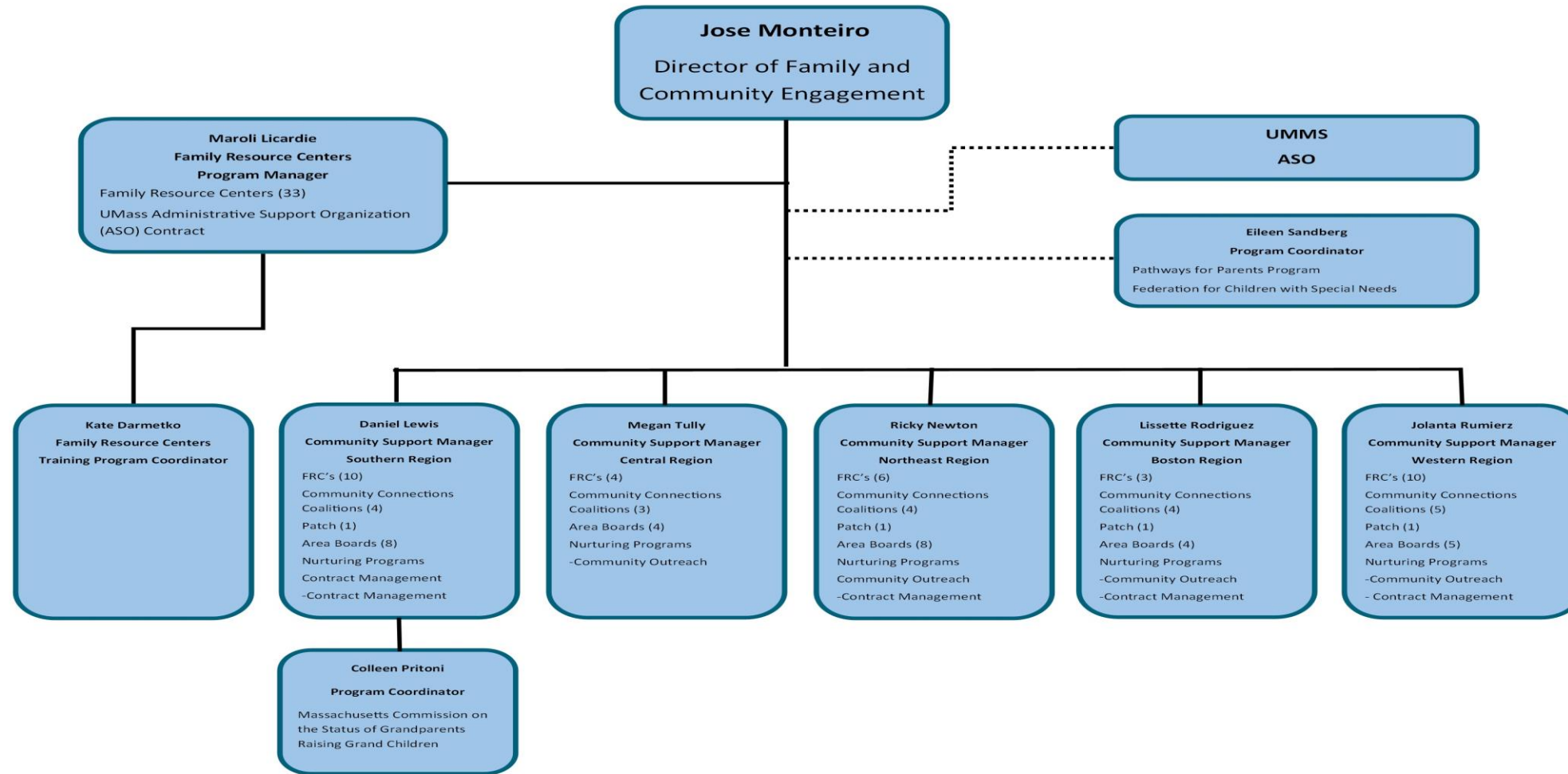
Maroli Licardie

FRC Network Program Manager DCF



www.frcma.org

Community and Family Engagement Team



Maroli Licardie

- Family Resource Centers Program Manager
 - Provides oversight to all 33 Family Resource Centers across the state. Sets general direction for the FRCs and works collaboratively with Community Support Managers (CSMs) to provide guidance and support.
- Contact: Maroli.Licardie2@mass.gov

Family Resource Centers Overview

Massachusetts Family Resource Centers (FRCs) are a statewide network of community-based providers offering:

- Information and Referral Services to families with children ages birth to 18 years of age
- Evidence Based Programs for parents and children
- Peer-to-peer support groups for youth and adults
- Assessment and family support planning
- Services for children requiring assistance (CRA) 6-18 years old
- Networking and mentoring opportunities
- Cultural, social, recreational and community service activities for families and youth
- Connection to and from state agencies, schools, and community



Family Resource Centers Building Blocks

- Prevention of child abuse and neglect
- Five Promise Framework
- Strengthening Families
- System of Care Framework
- Evidence-Based/Evidence-Informed Practice
- Trauma Informed Care
- Cultural Responsiveness and Inclusion

Chapter 240 Legislation 1

CHINS Reform

- The Family Resource Centers RFR was developed in response to the multi-year Child in Need of Services (CHINS) reform effort.
- The CHINS system served “status offenders,” including runaways, truants, children having significant problems at home and school, and sexually exploited youth.
- The resulting CHINS reform legislation, Chapter 240 of the Acts of 2012, **An Act Regarding Families and Children Engaged in Services**, was passed by the legislature, signed by the Governor Duval Patrick and became effective on November 5, 2012.

Chapter 240 Legislation 2

- Chapter 240 **encourages children and their families to seek assistance from EOHHS and DCF as an alternative to seeking services through the court.**
- Chapter 240 required EOHHS to **establish “Family Resource Centers”** and a “network of child and family service programs” throughout the Commonwealth to provide community-based services to families and children requiring assistance.
- Chapter 240 also established the Families and Children Requiring Assistance Advisory Board (FACRA)

Chapter 240 Legislation 3

Pursuant to Chapter 240, a “Child Requiring Assistance” is:

- A child between the ages of 6 and 18 years-old,
- Who repeatedly runs away from home;
- Repeatedly fails to obey the lawful and reasonable commands of their parent/guardian;
- Repeatedly fails to obey the lawful and reasonable regulations of the school;
- Is habitually truant; or is sexually exploited.

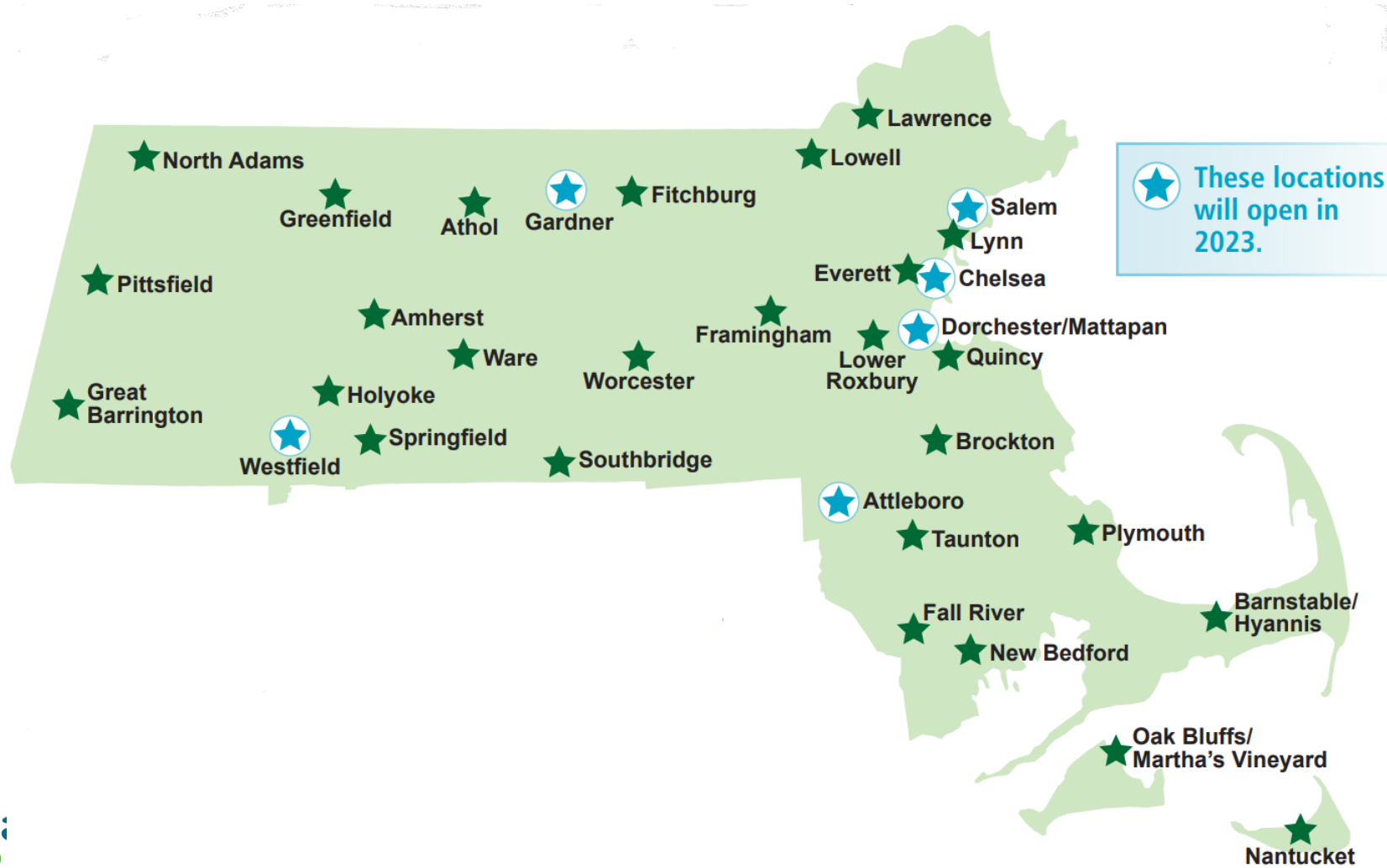
FRC Locations

The Family Resource Centers operate under the Family and Community Engagement Unit at the Department of Children and Families

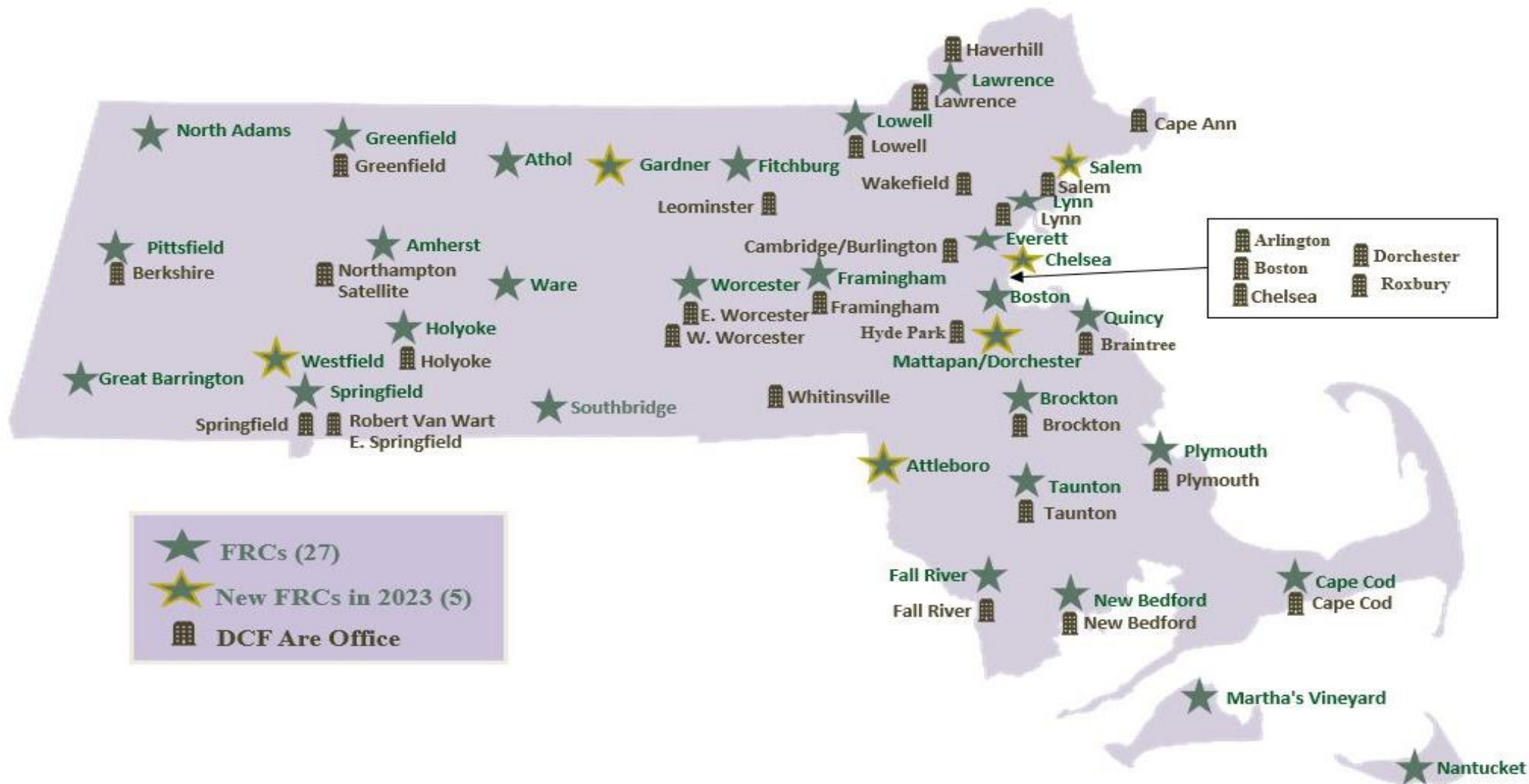
The FRC Network includes 33 centers operating in MA.



FRC Network



DCF Area Office Locations and FRCs



Grandparents Raising Grandchildren

The Commission's work is done through policy and legislative advocacy, providing community workshops and trainings, hosting an annual conference, as well as working with community partners such as The Family Resource Centers.

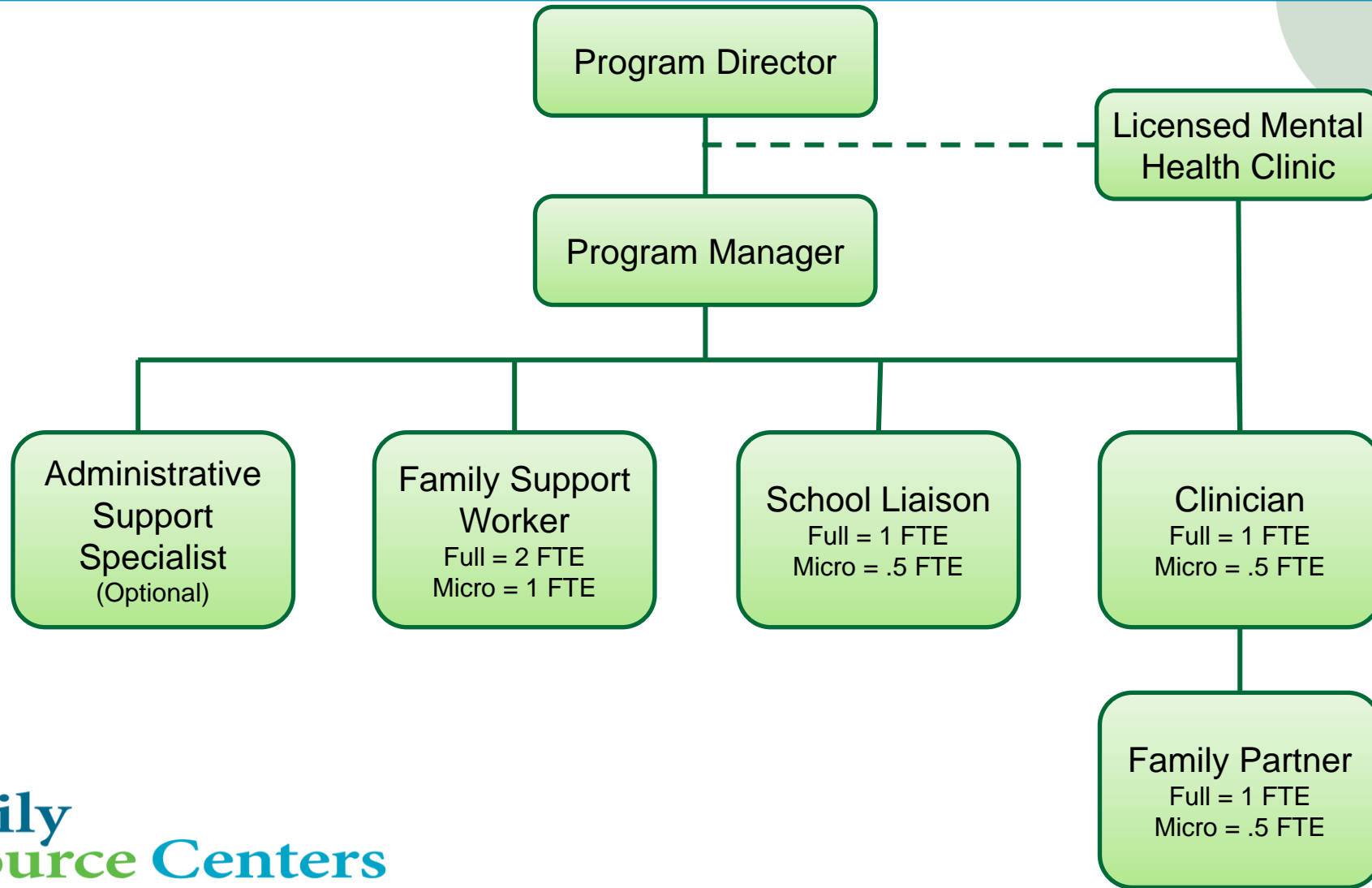


Pathways for Parents

Program Manager of the Pathways for Parents Program in partnership with the Federation for Children with Special Needs

- The Pathways for Parents Program provides support to many community organizations, as well as directly to parents and families who receive services from DCF. Our mission is to support effective parent and guardian participation in their child's education, enable access to emotional and behavioral support services, and strengthen supportive parenting skills.
- Contact: esandberg@fcsn.org

FRC Organizational Chart



Family Resource Centers Services 1

Massachusetts Family Resource Centers (FRCs) are a statewide network of community-based providers offering:

- Information and Referral Services to families with children ages birth to 18 years of age
- Adult and Child Screenings
- Individual referrals based on need
- Participation in group services

Family Resource Centers Services 2

Services for children requiring assistance (CRA) 6-18 years old

- Assessment and Family Support Planning
- Development of a Family Support Plan
- Follow up at 30 and 60 days

Family Resource Centers Services 3

Evidence Based Programs for parents and children

- Parenting Journey series
- Nurturing Families series
- Active Parenting series

Family Resource Centers Services 4

Peer-to-peer support groups for youth and adults

- Mutual Self Help Groups – weekly
- Life skills workshop – monthly
- Educational Programs – quarterly
- Grand Parents support groups – twice per month

Family Resource Centers Services 5

Parent leadership and advocacy opportunities

- Youth mentoring
- Peer-to-Peer family or youth groups
- Family/Youth Advisory Boards

Family Resource Centers Services 6

Other Service Options

- Cultural, social, recreational and community service activities for families and youth
- Connection to and from state agencies, schools, and community

Extraordinary Circumstances

Because of the great reputation of the FRCs across the state, we are often asked to participate in response efforts to help triage, coordinate, make referrals, and partner during emergencies and extraordinary circumstances.

- Hurricane Maria
- Refugee and Migrant Support
- Eviction/Housing Crisis
- COVID Basic Needs Response
- Local Emergency Responses

Local Fires

Merrimack Valley Gas Explosion

Floods

How to contact your nearest FRC

For a directory of all the centers

Reach out through the website

www.frcma.org

Questions ?